

MONTHLY MEMBERSHIP PROGRESS REPORT

LOCATION REP OF BANGLADESH

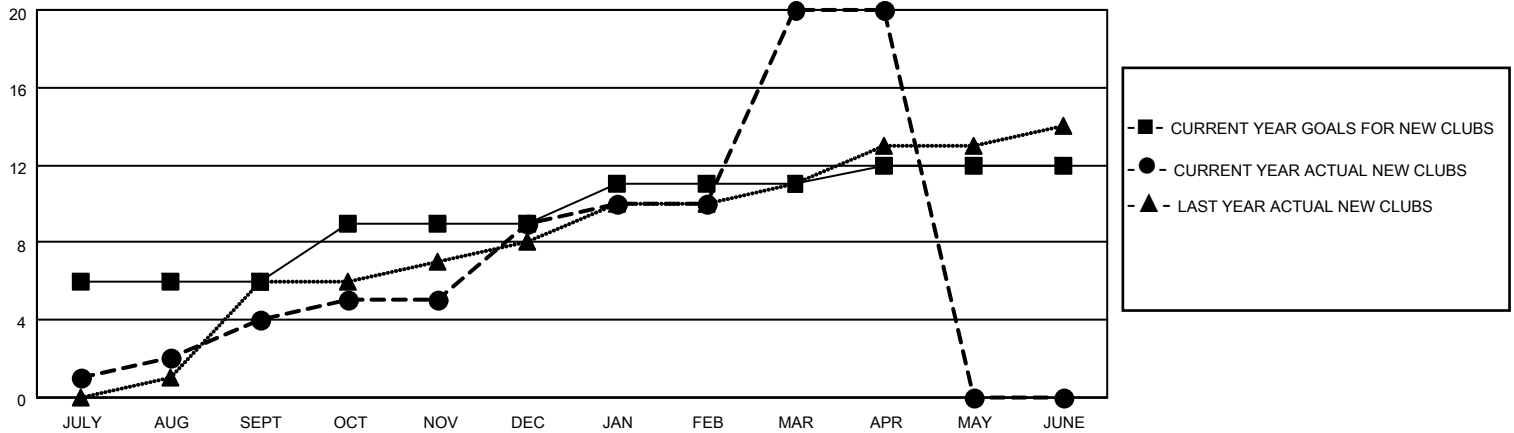
District 315A1

Results as of: 4/30/2023

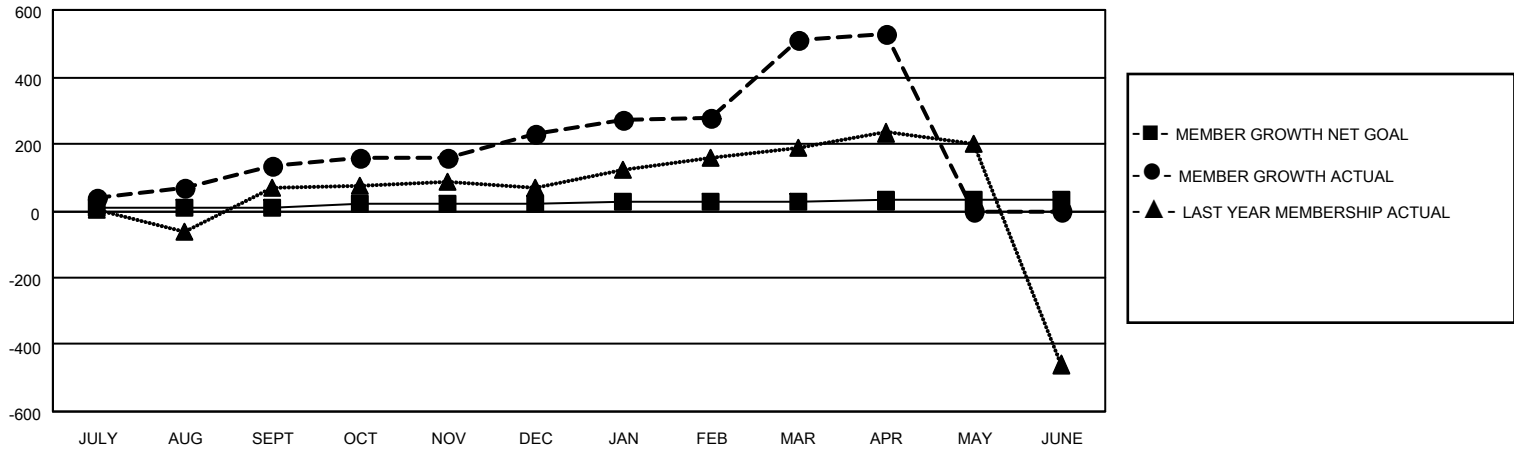
Clubs			
RESULTS FOR 2022-2023			
QUARTER	NEW CLUB GOAL	NEW CLUBS	DROPPED CLUBS
JULY/AUG/SEPT	6	4	0
OCT/NOV/DEC	3	5	0
JAN/FEB/MAR	2	11	0
APR/MAY/JUNE	1	0	0

Members			
RESULTS FOR 2022-2023			
QUARTER	MEMBER GROWTH NET GOAL	MEMBER GROWTH ACTUAL	DROPPED MEMBERS ACTUAL (including transfers)
JULY/AUG/SEPT	10	169	30
OCT/NOV/DEC	10	200	94
JAN/FEB/MAR	5	345	53
APR/MAY/JUNE	5	67	36

GOALS AND ACTUAL NEW CLUBS CUMULATIVE



GOALS AND ACTUAL MEMBERS CUMULATIVE



DROPPED CLUBS: 0	
DROPPED MEMBERS	
DECEASED	5
CLUB CANCELLED	0
OTHER	208
TOTAL	213

91 CLUBS OF 159 ADDED 1 OR MORE NEW MEMBERS

[CLICK HERE FOR CUMULATIVE MEMBERSHIP DATA](#)

<u>GENDER DISTRIBUTION</u>	
MALE	2,800 (77.11%)
FEMALE	831 (22.89%)
NON BINARY	0 (0.00%)
PREFER NOT TO ANSWER	0 (0.00%)
<hr/>	
TOTAL FAMILY UNIT MEMBERS	1,719
FAMILY MEMBERS PAYING HALF DUES	1,084